

Ex No: 4

UML Component Diagram for Student Management System

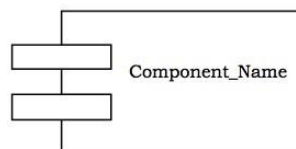
Aim: To draw UML Component diagram for student management system.

Procedure:

Component diagram is used model the physical aspects of a system. Physical aspects are elements such as executable, library and files in the system. It is used to visualize the organization and relationships among components in a system. It describes the components used to make those functionalities.

Component Diagram Notations

- Component
 - A component is drawn as a rectangle with optional compartments stacked vertically.

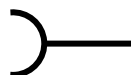


- Interface
 - Interfaces represent the places where the classes in the component communicate with other system components.

- Provider Interface



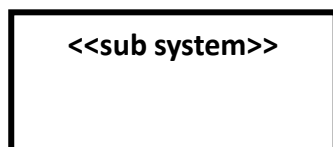
- Required Interface



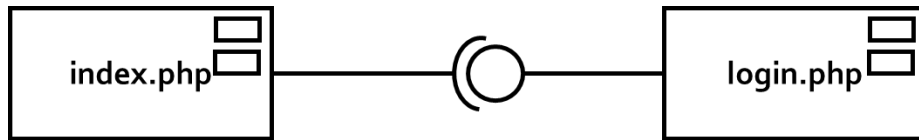
- Port
 - Interaction point between the component and environment.



- Subsystem
 - Denotes a part of the system



Sample



Result:

Thus UML Component diagram for student management system is drawn successfully.

Ex4

