

Aim: To draw UML Collaboration diagram for library management system.

Procedure:

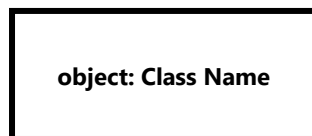
A Collaboration diagram shows the interactions between objects or components in a system in a visual manner. It is also known as communication diagram. The collaboration diagram and sequence diagram shows similar information but in a distinct form. They are used to determine the interfaces and class responsibilities. Objects collaborate through passing messages to each other.

Collaboration Diagram Notations

- Actor
 - An actor represents a role of a user that interacts with the system that you are modeling. The user can be a human user, an organization, a machine, or another external system.



- Object
 - Objects are shown as rectangles with naming labels inside. The naming label follows the convention of object name: class name



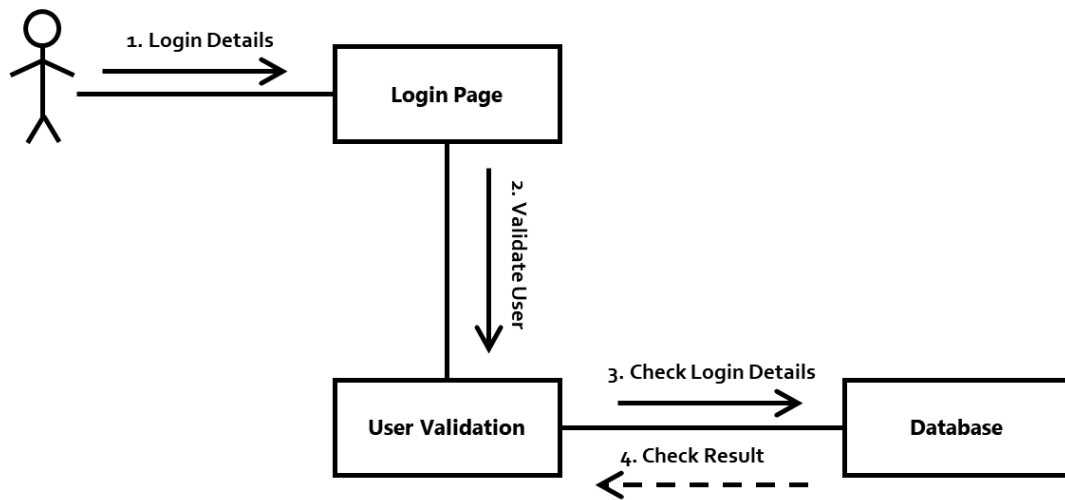
- Links
 - Links connect objects as well as actors. These are cases of associations, and each link within the class diagram relates to a connection.



- Messages
 - A message is an interaction between objects conveying information with the belief that the action will follow.
 - A message is displayed in collaboration diagrams as a labeled arrow, located near a link.



Sample



Result:

Thus UML Collaboration diagram for library management system is drawn successfully.

Ex8

